

L'Original Drinking Water System

Waterworks # 260037102
System Category – Large Municipal Residential

Annual Water Report

Prepared For: Champlain Township

Reporting Period of January 1st – December 31st 2025

Issued: February 26, 2026

Revision: 0

Operating Authority:



This report has been prepared to satisfy the annual reporting requirements in O.Reg 170/03 Section 11 and Schedule 22

Table of Contents

Report Availability	1
Compliance Report Card	1
System Process Description	1
Treatment & Distribution	1
Treatment Chemicals used during the reporting year:	2
Summary of Non-Compliance	2
Adverse Water Quality Incidents.....	2
Non-Compliance	2
Non-Compliance Identified in a Ministry Inspection:.....	2
Flows	2
Distribution Water Flows.....	2
Daily Flows by Month.....	2
Monthly Total Flow Comparison.....	3
Regulatory Sample Results Summary	3
Microbiological Testing.....	3
Operational Testing	3
Schedule 15 Sampling:	3
Organic Parameters	4
Additional Legislated Samples.....	4
Major Maintenance Summary	4
Distribution Maintenance.....	4

Report Availability

This system does not serve more than 10,000 residence and the annual reports will be available to residents on the Champlain Township website.

Compliance Report Card

Compliance Event	# of Events
Ministry of Environment Inspections	1 – Inspection completed on September 05, 2025 There were no non-compliances identified – 100%
Ministry of Labour Inspections	0
QEMS External Audit	External audit completed <ul style="list-style-type: none"> • 4 Opportunities for Improvement (OFI)’s identified • 1 Minor Non-Conformity
AWQI’s/BWA	0
Non-Compliance	0
Community Complaints	3
Spills	0
Watermain Breaks	0

System Process Description

Treatment & Distribution

The L’Original water distribution system is a stand alone distribution system, receiving treated water from the Hawkesbury Distribution System.

The system consists of the following:

- 6 km transmission line of 300 mm pipe, connecting to the existing distribution system at Lecours and Eliza Streets
- a 1588 m³ standpipe, a booster station with four booster/recirculation pumps, providing 61.5 L/s, for standpipe recirculation, low system pressure boosting and fire flow protection; chlorination facilities, complete with two 17 L/s capacity chemical feed pumps and one 29 L/s chemical feed pump for the standpipe maintenance and fire flow, chemical solution storage tank, chlorine analyzer and chart recorder
- a 100 kW diesel generator, a control chamber for metering and isolation and miscellaneous electrical and instrumentation controls.

Treatment Chemicals used during the reporting year:

Chemical Name	Use	Supplier
Sodium Hypochlorite	Disinfection	Brenntag

Summary of Non-Compliance

Adverse Water Quality Incidents

Date	AWQI #	Location	Problem	Details	Legislation	Corrective Action Taken
There were no adverse water quality incidents reported during the reporting period.						

Non-Compliance

Legislation	requirement(s) system failed to meet	duration of the failure (i.e. date(s))	Corrective Action	Status
There were no non-compliance issues reported during the reporting period.				

Non-Compliance Identified in a Ministry Inspection:

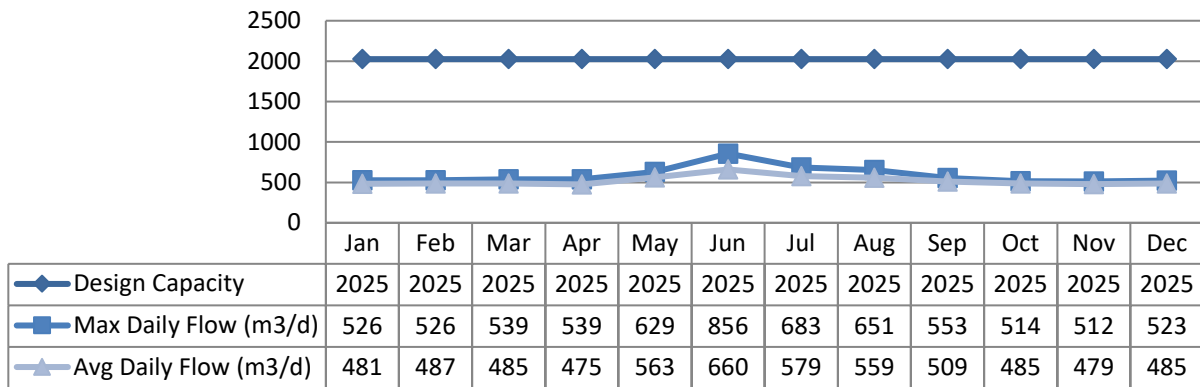
Legislation	Requirement(s) system failed to meet	Details	Corrective Action	Status
There were no non-compliance issues reported during the reporting period.				

Flows

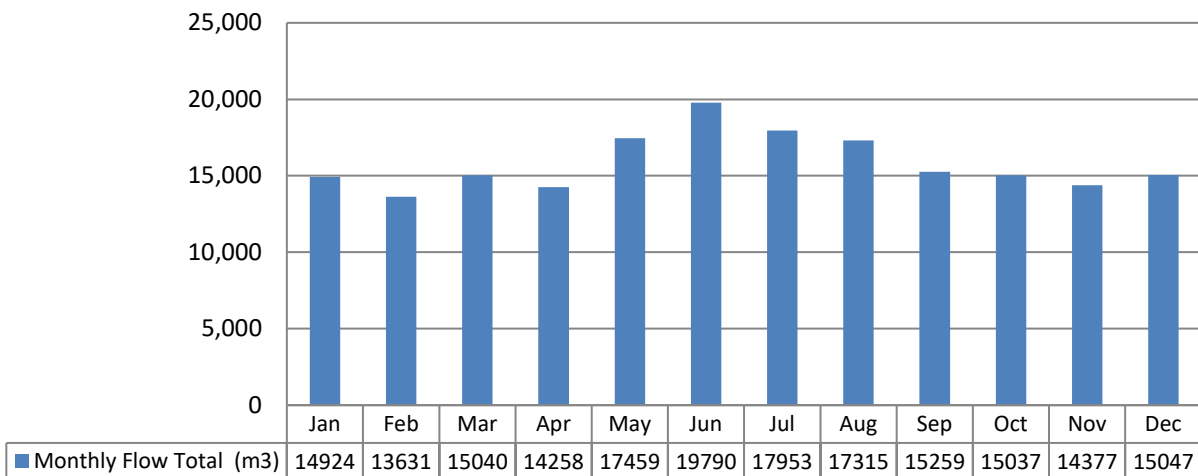
With a 2025 annual average day flow of 520.8m³/d, the L’Original Water Distribution System is operating at roughly a quarter or 25% of its design capacity of 2025m³/day.

Distribution Water Flows

Daily Flows by Month



Monthly Total Flow Comparison



Regulatory Sample Results Summary

Microbiological Testing

	No. of Samples Collected	Range of E.Coli Results		Range of Total Coliform Results		No. of HPC Samples Collected	Range of HPC Results	
		Min	Max	Min	Max		Min	Max
Distribution Water	156	0	0	0	0	52	2	4

Operational Testing

	No. of Samples Collected	Range of Results	
		Minimum	Maximum
Free Chlorine Residual, On-Line (mg/L) - DW	8760	0.37	2.01
Free Chlorine Residual, DW Field (mg/L) Lab Upload - DW	156	0.40	1.53

NOTE: spikes recorded by on-line instrumentation were a result of power flicks, PLC resets and various maintenance/calibration activities. All spikes are reviewed for compliance with O.Reg 170/03

Schedule 15 Sampling:

The Schedule 15 Sampling is required under O.Reg 170/03. This system is under reduced sampling. No plumbing samples were collected.

Distribution System	Number of Sampling Points	Number of Samples	Range of Results		MAC (mg/L)	Number of Exceedances
			Minimum	Maximum		
Alkalinity (mg/L)	2	4	23	30	N/A	N/A
pH	2	4	6.8	7.4	N/A	N/A
Lead (mg/L)	2	4	0.00008	0.00328	0.01	N/A

Organic Parameters

These parameters were tested quarterly as a requirement under O.Reg 170/03.

	Sample Date (yyyy/mm/dd)	Running Average	MAC	No. of Exceedances	
				MAC	1/2 MAC
Distribution Water					
Trihalomethane: Total (ug/L) Annual Average - DW	January 5, 2026	84.75	100	No	Yes
Haloacetic Acids: Total (ug/L) Annual Average – DW	January 5, 2026	48.93	80	No	Yes

MAC = Maximum Allowable Concentration as per O.Reg 169/03

BDL = Below the laboratory detection level

Additional Legislated Samples

There was no additional sampling required.

Major Maintenance Summary

Distribution Maintenance

Date	Location Reference	Details
2025	L’Original	Watermains, curb shut off and valve boxes emergency repairs
April 4	WPCP	Installed water meter for contractor on hydrant
April 29	L’Original Distribution	Hydrant emergency repairs
June 3	L’Original Distribution	Spring hydrant flushing
August 5	L’Original Distribution	Hydrant inspection/flow test
November 20	L’Original Distribution	Flow test in distribution
December 09	Stand Pipe	Diesel unit fuel leak repair